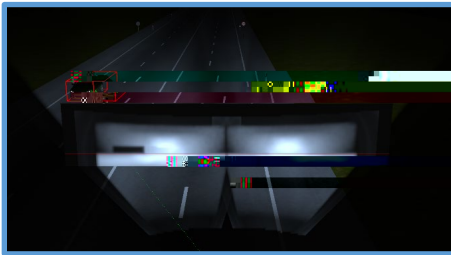


# LucidDrive Version 2024.03 New Features

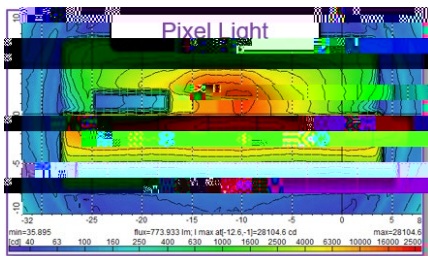
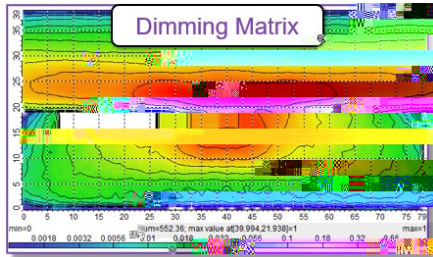
## Real-Time Analysis, Adaptability, and Enhanced Pixel Light Testing



The LucidDrive version 2024.03 release includes features to enhance your Pixel Light testing experience, aiming wall improvements for all scenarios, and more.

### Pixel Light Baseline Layer

The pixel light feature now includes a third dimming matrix layer, the baseline layer. It is an addition to the existing main layer and icon overlay. Unlike the previous layers, the baseline layer is not dimmed down by AFS (Adaptive Front lighting System)



LucidDrive's vehicle roll feature has been enhanced with a suitable aiming wall, an essential feature considering the increasing trend towards SUVs and trucks. This new addition allows the aiming wall to be oriented at the road surface, displaying changes in wall illumination.

### Trigger Point Scripts for Lamp Switching 📍

visit [synopsys.com/optical-solutions](https://synopsys.com/optical-solutions), or send an email to



[optics@synopsys.com](mailto:optics@synopsys.com).