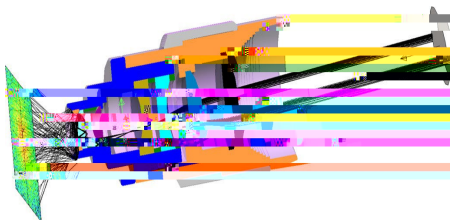


What's New in LightTools Version 2024.03

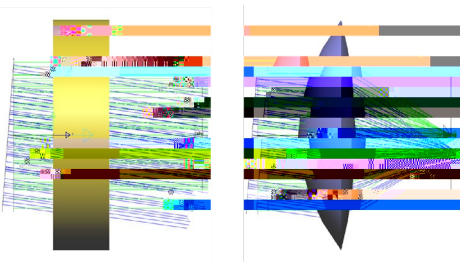
Upgrade Your Illumination Optics Designs



LightTools 2024.03 features a new sequence ray tracing engine, global optimization engine, environmental analysis, and thin film enhancements.

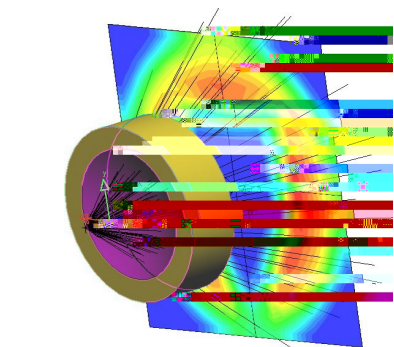
Sequence RayTracing

The new sequence ray tracing engine allows for more efficient simulation of complex optical systems. It features a new ray tracing algorithm that significantly reduces simulation time for large, multi-component systems.



Global Optimization Engine

The global optimization engine provides a powerful tool for optimizing optical designs. It automatically adjusts parameters to achieve the best possible performance, saving time and effort in the design process.



Environmental Analysis

LightTools now includes an environmental analysis tool that allows users to simulate the effects of environmental factors on optical performance. This includes temperature variations, humidity, and mechanical stress, ensuring designs are robust and reliable.

Thin Film Enhancements

The thin film enhancements provide a more accurate simulation of thin film coatings. This includes the ability to model complex multi-layer coatings and their effects on light transmission and reflection.

