

NCAM

NCAM

NCAM

3D5`E;? @53?

KPI (1)

(2)

(3)

C++

NCAM

.CC

MetaWare
NCAM

(MDB) nSIM GUI

/

ARC

Profiling

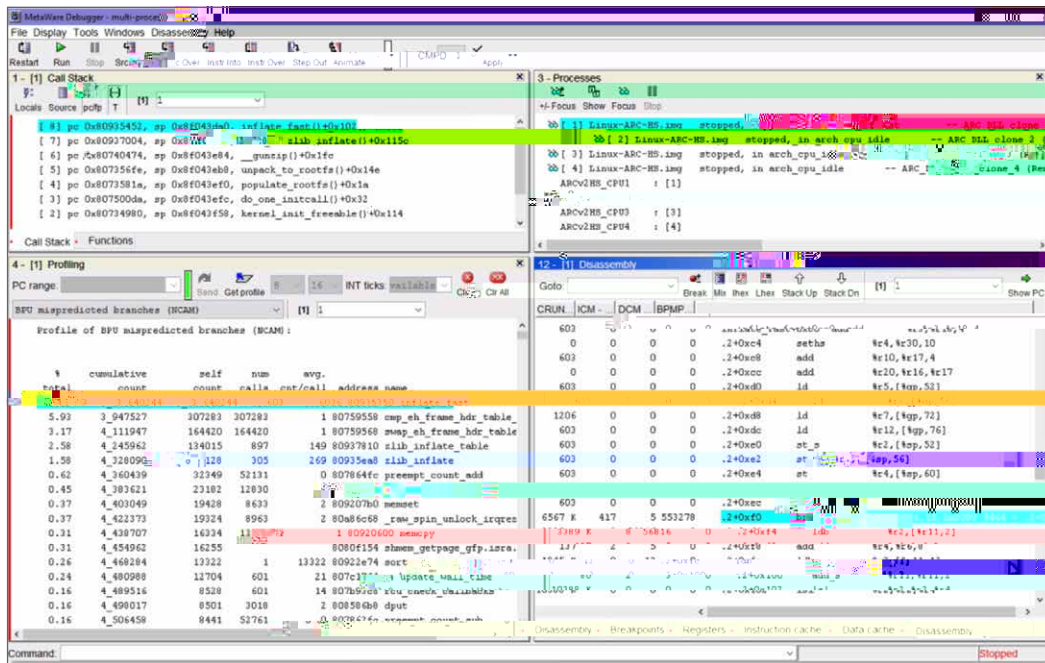
The screenshot shows the MetaWare Debugger interface with several panels:

- Call Stack:** Shows a stack of function calls including `inflat_fast`, `inflat`, `quasip`, `unpack_to_roots`, `populate_roots`, `do_ose_initcall`, and `kernel_init_freeable`.
- Processes:** Lists several Linux-ARC-MS-IMG processes, some stopped in various states like `in arch_cpu_idle` or `in arch_cpu_idle`.
- Disassembly:** Shows assembly code for `memcpy` instructions, including addresses like `0x0020740` and `0x002075c`.
- Profiling:** A table showing cache miss counts and instruction counts for various memory addresses and instructions.

\$? 64 @53?

Source Disassembly Disassembly
CRUN ICM DCM

KPI Profiling Disassembly



% ? 64 @53?

Profiling

Disassembly

BPMP

C/C++

if/else

for/while

3D5 `E;? @53?

NCAM

ARC nSIMNCAM

CPI

3D5 ` E;? @53?

NCAM

/

NCAM

NCAM

NCAM

•
—
— NCAM

•
—
—

•
—
—

NCAM

•
—
— NCAM

— ARC xCAM RTL FPGA

•
—
— NCAM

— ARC xCAM RTL FPGA