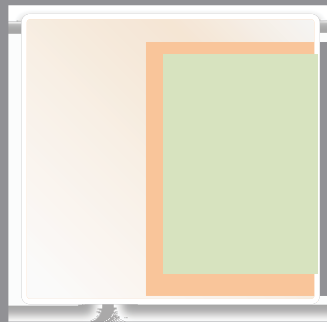
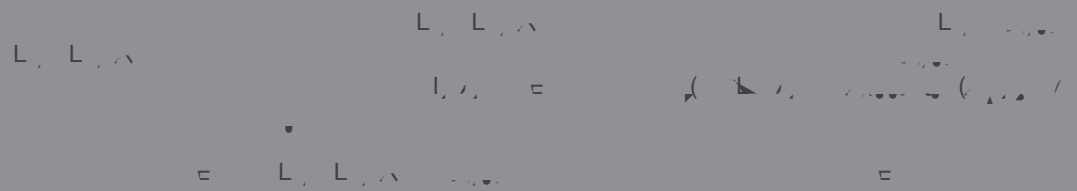


# MIPI M-PHY UniPro UFS

1/6-4

Ramesh Hanchinal, Director, (E)

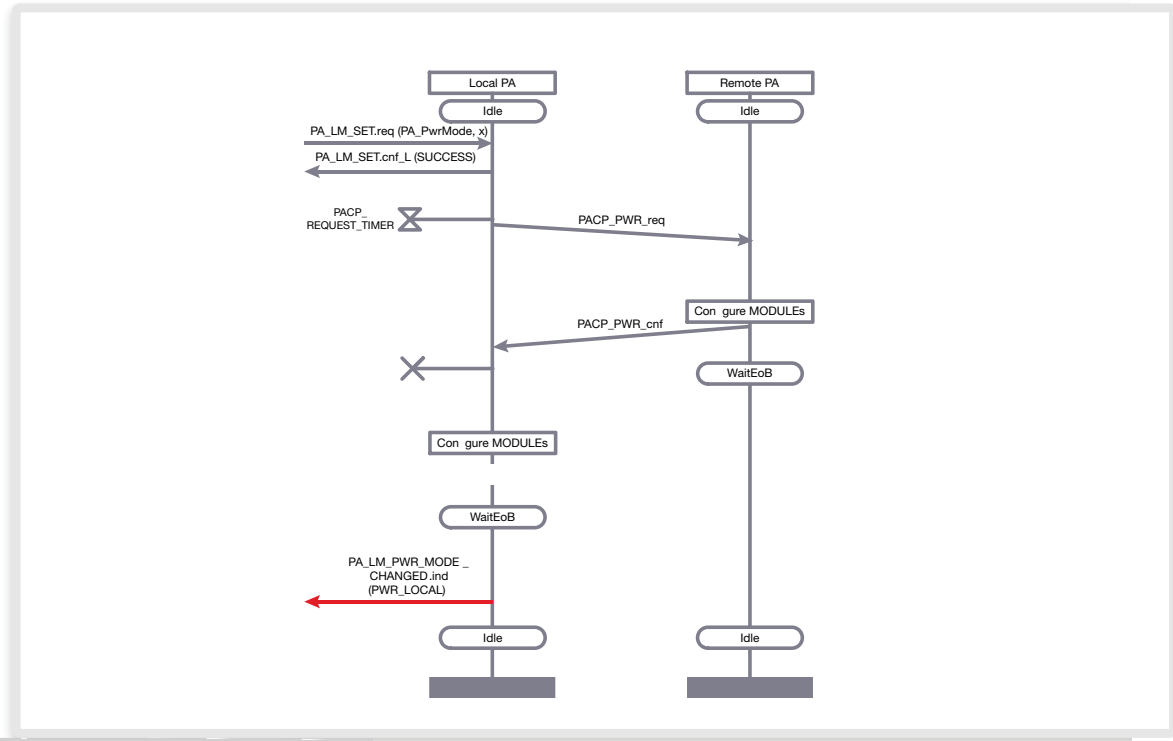
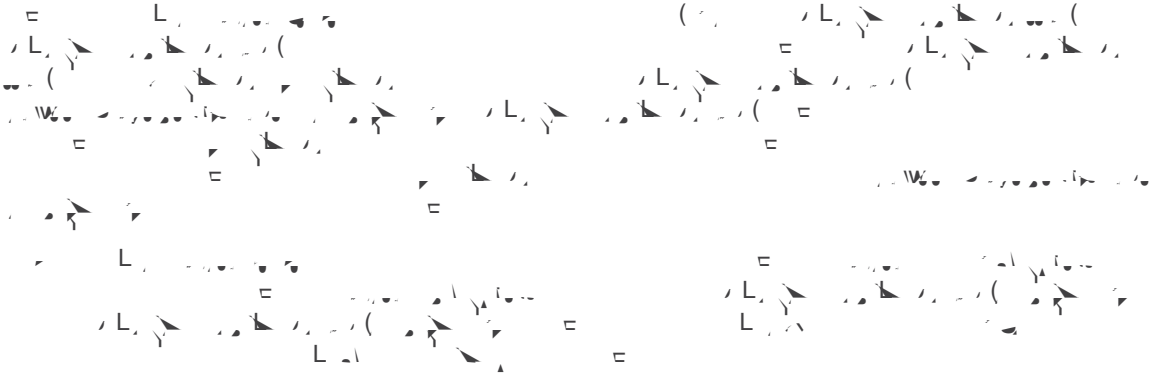
Synopsys



# JEDEC UFS MIPI UniPro MIPI M-PHY

l, /, =  
= = 1 =  
▶ = (





## UFS

- ▶  $\int \frac{1}{x^2} dx = -\frac{1}{x} + C$
- ▶  $\int \frac{1}{x^3} dx = -\frac{1}{2x^2} + C$
- ▶  $\int \frac{1}{x^4} dx = -\frac{1}{3x^3} + C$

